



PROJECT		REF		REV	ITEM CODE	
LOCATION		DATE			PAGE	

SANITARY WARE SPECIFICATION SHEET

<p>Item Descriptions</p> <p>Mediclinics (Spain) Stainless steel AISI 304 behind the mirror automatic liquid soap/hand sanitizer dispenser in 6AA batteries DC supply</p>	<p>Dimensions</p> <p>L117 x W105 x H241 mm</p> <p>Capacity</p> <p>1L maximum</p> <p>Model</p> <p>DJM0037A</p> <p>Finish</p> <p>Satin Finish (Body)</p> <p>Material</p> <p>Stainless Steel AISI 304</p> <p>Manufacturer</p> <p>Mediclinics, S.A. (Spain)</p> <p>Supplier</p> <p>Acme Sanitary Ware Co. Ltd Mr. Eric Wong/ Mr. Wilson Hung</p> <p>Contact Tel/Fax</p> <p>(852) 2388-7171 / (852) 2710-8012</p> <p>E-mail</p> <p>acme@acmesanitary.com.hk</p> <p>Website</p> <p>www.acmesanitary.com.hk</p>	<p style="text-align: center;">Illustration/ Drawing</p> <p style="text-align: center;"> Liquid soap / sanitizer</p> <div style="text-align: center;"> </div> <div style="text-align: center;"> </div> <p style="text-align: right;">Dimensions: ± 4%</p>														
<p>General Description</p> <ul style="list-style-type: none"> • Automatic liquid soap/hand sanitizer dispenser with touch-free operation eliminating cross-contamination, with AISI 304 stainless steel body, for hidden installation behind the mirror. • Designed to be fitted behind a mirror or panels, this liquid soap/hand sanitizer dispenser helps to ensure that the bathroom remains organized and tidy. • Delivers an accurate liquid soap/hand sanitizer dosage by simply approaching one's hands, without users contact, avoiding crosscontamination and creating an environment without germs and totally automated. • 1,000ml refillable plastic container, with easy access to replenish the liquid soap/hand sanitizer. • Operates on 6 AA alkaline batteries (not provided) or optionally, with an AC adapter. Order reference DJM0037A-TRAFO to receive the automatic liquid soap/hand sanitizer dispenser able to be connected to the mains with the AC adapter. • Suitable for liquid soap or hand sanitizing gels. • It is recommended to use liquid soap or hand sanitizer with the following <p>characteristics:</p> <ul style="list-style-type: none"> - Maximum alcohol content of 80% - Density between 0.9 and 1.35 kg / dm³ - Viscosity between 500 and 2,500 cps. <p>It does not support soaps that contain methanol, chlorine or solid or abrasive particles.</p> <ul style="list-style-type: none"> • Screws and plastic plugs to mount on a brick wall supplied. 		<p>Technical specifications</p> <table border="1" style="width: 100%; border-collapse: collapse;"> <tr> <td>Dimensions</td> <td>241 x 105 x 117 mm</td> </tr> <tr> <td>Maximum capacity</td> <td>1 L</td> </tr> <tr> <td>Body, cover & base plate</td> <td>0.8 mm</td> </tr> <tr> <td>Inner tank thickness</td> <td>2.5 mm</td> </tr> <tr> <td>Net weight</td> <td>0.64 Kg</td> </tr> <tr> <td>Quantity dispensed per pump</td> <td>1.5 ml</td> </tr> <tr> <td>Detection range</td> <td>8 – 12 cm</td> </tr> </table>	Dimensions	241 x 105 x 117 mm	Maximum capacity	1 L	Body, cover & base plate	0.8 mm	Inner tank thickness	2.5 mm	Net weight	0.64 Kg	Quantity dispensed per pump	1.5 ml	Detection range	8 – 12 cm
Dimensions	241 x 105 x 117 mm															
Maximum capacity	1 L															
Body, cover & base plate	0.8 mm															
Inner tank thickness	2.5 mm															
Net weight	0.64 Kg															
Quantity dispensed per pump	1.5 ml															
Detection range	8 – 12 cm															

Note:





PROJECT		REF		REV	ITEM CODE	
LOCATION		DATE			PAGE	

SANITARY WARE SPECIFICATION SHEET

Components & materials

- **WALL PLATE:** made of stainless steel AISI 304, 0.8 mm thick. It is mounted on the wall by means of four Ø4 stainless steel screws (provided) with their corresponding Ø 6mm plastic plugs (also provided).
- **INNER PLASTIC TANK:** prevents oxidation and can be easily removed for cleaning and disinfection purposes.
- **VALVE:** anti-drip corrosion resistant that dispenses 1.5 ml of soap per service.
- **POWER:** 6 AA alkaline batteries (not provided) or optionally, AC adapter. Order reference DJM0037A-TRAFO to receive the automatic soap dispenser able to be connected to the mains with the electrical transformer.
- **INFRA-RED DETECTION RANGE:** between 8 and 12 cm.

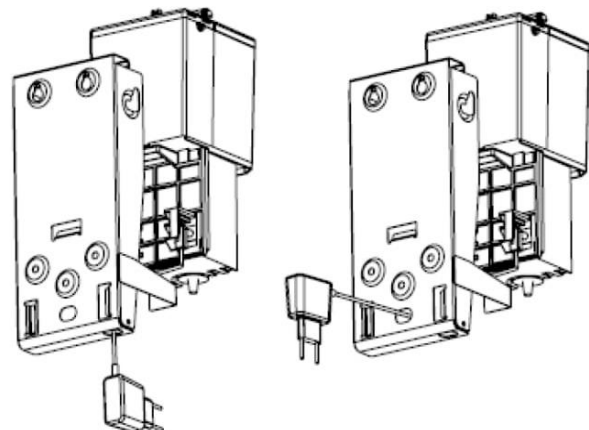
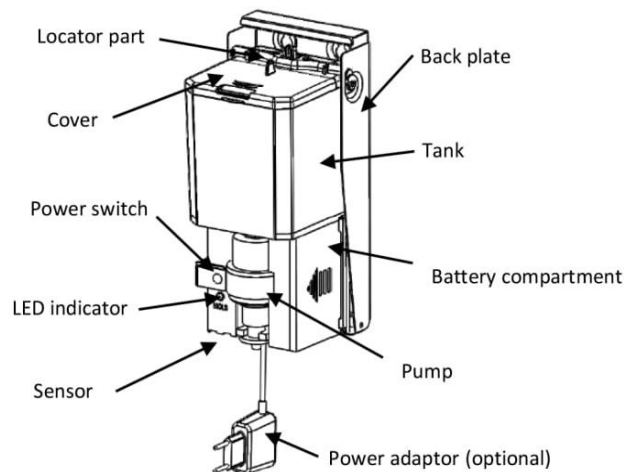


mediclinics DJM0037A*/38A*/39A*

**Automatic Soap Dispenser
Behind the mirror**

Instructions

Soap Dispenser components



The power adaptor (optional) could be assembled by the lower or back part of the product

Note:

* All information of the above is for the reference only. No prior notice is made if any changes.

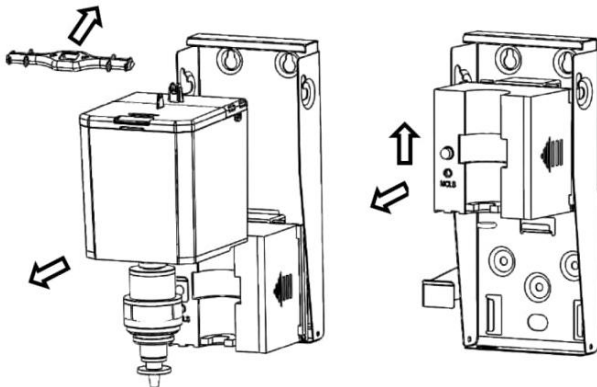
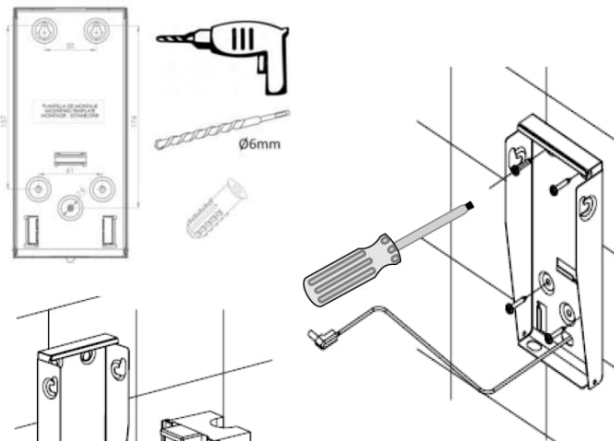
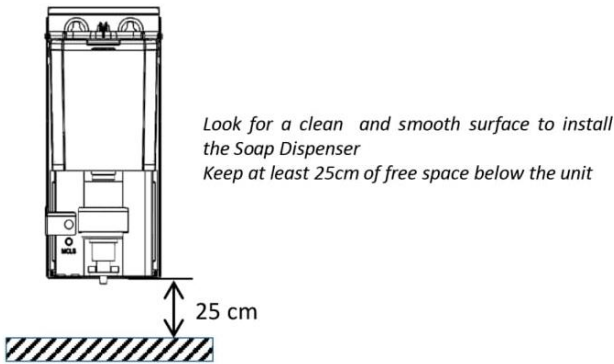




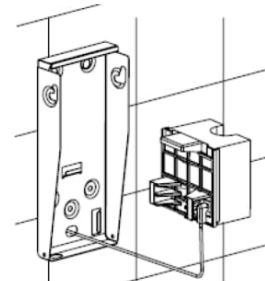
PROJECT		REF		REV	ITEM CODE	
LOCATION		DATE			PAGE	

SANITARY WARE SPECIFICATION SHEET

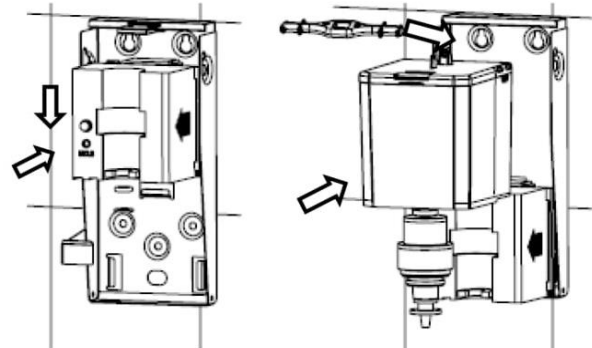
Installation



Remove the soap tank locator and the soap tank with the valve
Remove the mechanism



Drill the wall using the provided mounting template
Route the cable through one of the provided holes if you are using the power adapter
Firmly screw the unit to the wall (screw bag included)



Reassembly the mechanism, the soap tank with the valve and the soap tank locator
The front push button has to be correctly pushed

Note:

* All information of the above is for the reference only. No prior notice is made if any changes.

